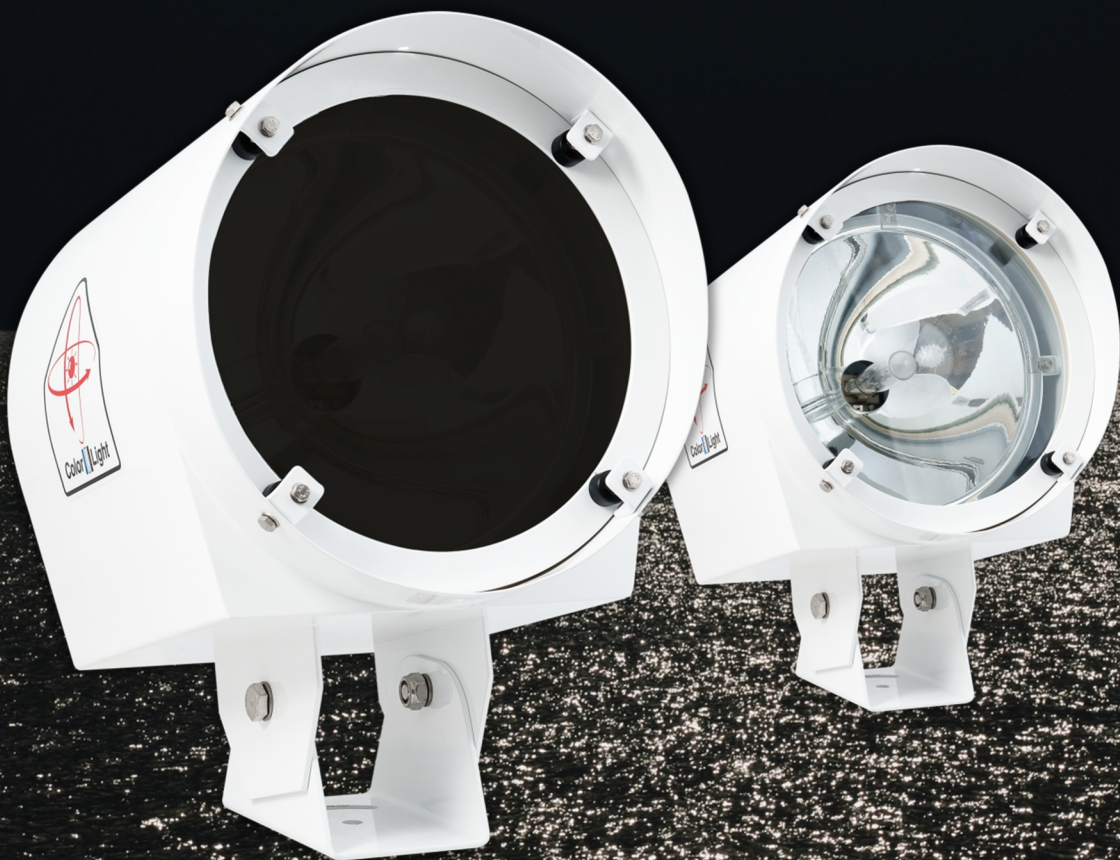


SEARCHLIGHT SYSTEM BY COLORLIGHT

USER'S MANUAL



CL10, CL15

ENG

CONTENT

1. **WARNINGS AND INFORMATION**..... 3

2. **OPERATOR PANEL, OVERVIEW**..... 5

3. **SWITCH ON LIGHT** 6

4. **FOCUS** 6

5. **SUPPORT**..... 7

1. WARNINGS AND INFORMATION



High voltage!

Before opening any part of the fixed light system, make sure all power is switched off!



UV-light! (models CL10-02 and CL15-02)

The UV-light used by ColorLight is chosen for most efficient result in marine applications. The wavelengths are below 400 nanometers, thus not visible for the human eye. An intensive radiation is generated from the high luminance of the arch inside the bulb and should not be glared into from close distance. Intentionally ColorLight is allowing a small leakage of white light making the beam vaguely detectable in fog. Avoid quick switch on and switch off as it may shorten the lifetime of the bulb. Allow a couple of minutes cool down period, if possible.

UV-light overheat

CL10 and CL15 fixed lights are designed and built primarily for the marine environment.

UV light generates a lot of heat and we use ambient air as a coolant for our lamp body. For uses other than marine this must be taken into account so that sufficient cooling is available or to adapt the operating time to prevent overheating damage such as cracked UV glass.

Eye safe exposure time for UV

CL10-02, CL15-02: Max 2 minutes at 1 m. Max 4 minutes at 2 m. Max 9 minutes at 4 m. Max 65 minutes at 9 m.

Welding eye glasses are recommended if you for some reasons have to expose your eyes longer periods at those close distances.

We see no reason for such exposure even at service activities. Sunglasses are also good protection.



Bulb

When changing bulb be sure to not touch the surface of the bulb with bare fingers. If inadvertently touched with bare fingers it should be degreased immediately with alcohol and a soft lint free cloth. Be sure to wipe dry the bulb surface afterwards.

Reflector

The parabolic reflector developed by ColorLight has an extremely smooth surface to focus the light in wide or narrow beam. Bare fingers should never touch the reflector surface. If inadvertently touched, the reflector surface should immediately be degreased with alcohol and a soft lint free cloth.

Light beam heat damage

This fixed light is built for use on long distances and the high-intensity light from the fixture can, if set at a narrow beam, cause severe damage to surfaces closer than 1 meter

If protection hood is used over the fixture the system main power switch in the electric box should be off; this is a precaution to reduce the risk of fire if the hood is not removed before turning the light on.

Cleaning

Never wash the fixture with water under high pressure because this can penetrate through the seals and cause damage to mechanical and electrical components. Do not use strong solvents such as thinner or acetone to clean the fixture or the operator panel.

Deicing

Removal of ice should be done with caution. Physical violence could damage the front glass. Instead turn on the light and let the heat melt the ice.



Recycling and disposal

Bulbs used for models CL10 and CL15 contain mercury and must be recycled or disposed according to applicable local and national regulations.



2. OPERATOR PANEL, OVERVIEW



Figure 1: The operating panel.

1. Lamp on / off.
2. Focus.

Sections in the manual refer to the above figures.

3. SWITCH ON LIGHT

The fixed light is equipped with either white or UV light. The light can be turned on by switching the rocker switch (1) to position “1”.

Switch the rocker switch (1) to position “0” to turn off the light.

4. FOCUS

Pressing the focus button (2) changes the focus for the fixture.

As long as a focus button is pressed the bulb moves in and out which changes the focus of the light.

Release the button when the required focus is found.

5. SUPPORT

If you have questions about the fixed light and its features, please contact ColorLight technical support worldwide, see www.colorlight.com for contact details.

Or contact ColorLight head office:

Color Light AB
Engineering-Color Light
cl@colorlight.com
Phone: +46 353 8270
Fax: +46 35 38279

Notes:
