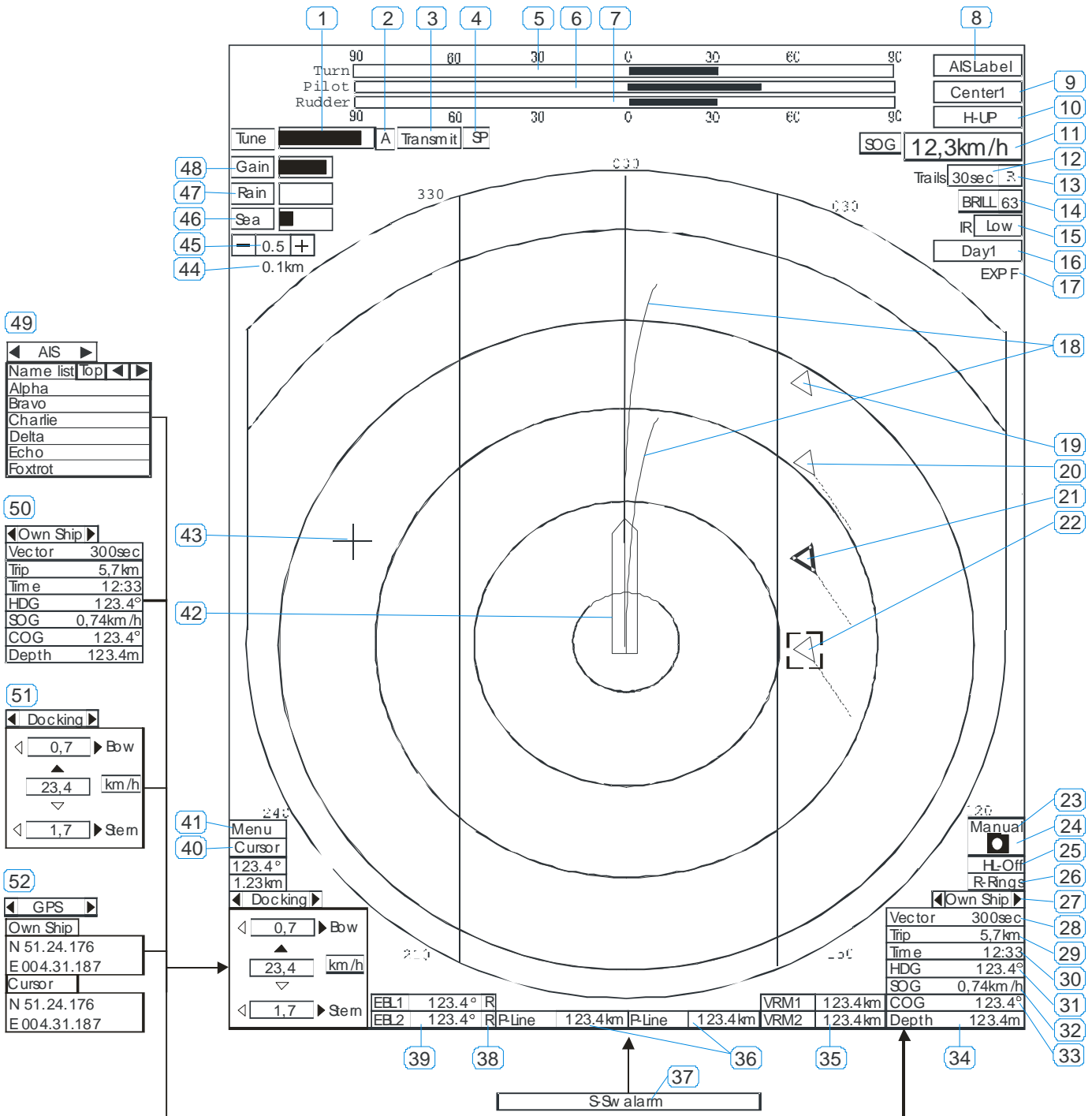
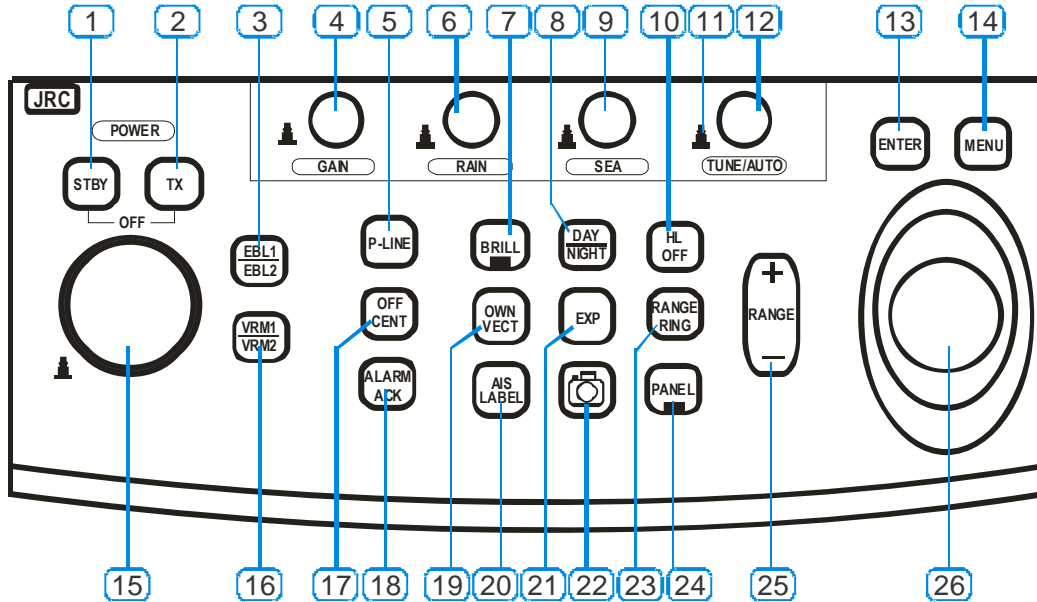


- | | | |
|--------------------------------------|------------------------------------|---|
| 1 Tuning indicator | 19 AIS targets without speed | 36 P-Line 1 / P-Line 2 |
| 2 Automatic/Manual tuning | 20 AIS target sailing | 37 Alarm (over P-Line) |
| 3 Standby/Transmit | 21 AIS target selected from list | 38 Relative/true EBL |
| 4 Pulslength | 22 AIS target selected from screen | 39 EBL 1 / EBL 2 |
| 5 ROT indicator | 23 Screen capture mode | 40 Cursor readout |
| 6 Autopilot indicator | 24 Screen capture start/stop | 41 Menu |
| 7 Rudder indicator | 25 Heading line suppression | 42 Own / 2 ^e ship contour line |
| 8 Show vessel names AIS* | 26 Fixed range rings on/off | 43 Cursor |
| 9 (Off)centre | 27 Selection window right bottom | 44 Distance fixed range rings |
| 10 Stabilisation((RT)H-up/N-up/C-up) | 28 Own vector length | 45 Range |
| 11 Depth or speed over ground | 29 Distance counter | 46 Sea clutter suppression (STC) |
| 12 Length trails | 30 Time | 47 Rain clutter suppression (FTC) |
| 13 Relative/true trails | 31 Heading ((GPS)compass) | 48 Gain |
| 14 Monitor brilliance | 32 Speed over ground (GPS) | 49 AIS vesselname list |
| 15 Interference rejection | 33 Course over ground (GPS) | 50 Own Ship information |
| 16 Day/Night mode | 34 Depth below keel (echosounder) | 51 Docking |
| 17 Echo enhancement | 35 VRM 1 / VRM 2 | 52 (Cursor) Position (GPS) |
| 18 Own Vectorline(s) | | |

* For some items extra equipment is needed



- | | | |
|--------------------------|---|-----------------------------|
| 1 Standby | 10 Heading line suppression (temporary) | 19 Own vessel vector length |
| 2 Transmit | 11 Auto / manual tuning (switch) | 20 AIS vessel names list |
| 3 EBL 1 / EBL 2 | 12 Tune, manual setting | 21 Echo enhancement |
| 4 Gain | 13 Enter button | 22 Screen capture |
| 5 Parallel lines | 14 Menu button | 23 Fixed range rings |
| 6 Rain suppression (FTC) | 15 Multi knob | 24 Panel brilliance |
| 7 Brilliance | 16 VRM | 25 Range up / down |
| 8 Day/night mode | 17 (Off)centre | 26 Trackball |
| 9 Sea suppression (STC) | 18 Alarm acknowledge | |



<p>On/off:</p> <ul style="list-style-type: none"> - Switch on, push [stby]. - Transmit, push [tx]. - Standby, push [stby]. - Power off, push [stby] & [tx]. - Range up/down, push [+ range -]. 	<p>Echo quality:</p> <ul style="list-style-type: none"> - Gain. - FTC, rain clutter suppression. - STC, sea clutter suppression. - Tune, receiver tuning (push to switch between auto/manual) - [Exp] echo enhancement 	<p>Brilliance:</p> <ul style="list-style-type: none"> - Brill, monitor brilliance. - Panel, panel brilliance. - Day / night mode. - Contrast setting in menu
<p>Multi knob:</p> <ul style="list-style-type: none"> - EBL1/2 - VRM1/2 - Parallel lines - Brilliance 	<p>Synthetics:</p> <ul style="list-style-type: none"> - Fixed rings, push [range ring]. - Heading line, [hl off] keep pressed. 	<p>Screen capture:</p> <ul style="list-style-type: none"> - Push on the camera button to record screens onto the flashcard.
<p>Offcentre:</p> <ul style="list-style-type: none"> - (Off)centre, push [off cent]. - centre, push [cent] 	<p>Vector line(s):</p> <ul style="list-style-type: none"> - Own vector, push [Own vect], (1 or 2 straight or curved vecor line(s) will be shown. Depending on the connected equipment. - Own vecor line(s) off, keep pressed the [own vector] button. 	<p>Cursor:</p> <ul style="list-style-type: none"> - Cursor, use the trackball to move the cursor.
<p>Alarm:</p> <ul style="list-style-type: none"> - Push [alarm ack] to acknowledge an alarm. 	<p>AIS:</p> <ul style="list-style-type: none"> - Keep pressed the [AIS label] to show the vessel names from the vessels equipped with AIS. 	<p>Menu:</p> <ul style="list-style-type: none"> - Push [menu] to open the menu - Use trackball to scroll into the menu - To change a setting in the menu, push [enter].