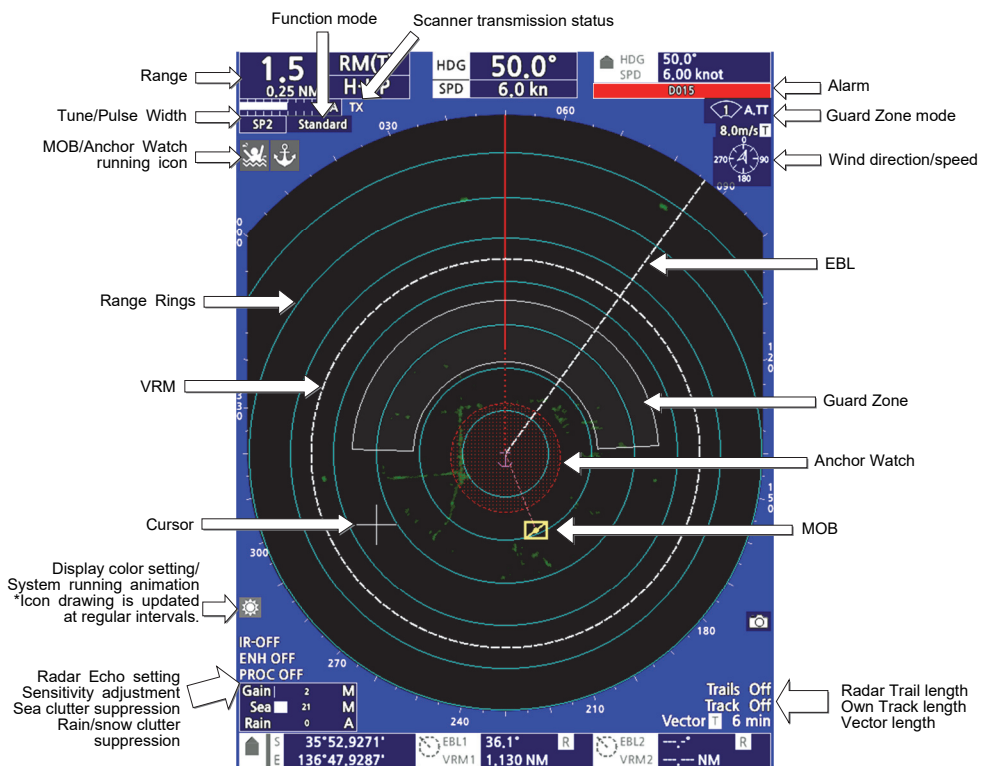


JMA-3400 Series SIMPLIFIED MANUAL



Notice:

- Please read the instruction manual for details.
Keep this simplified instruction manual in a safe place and refer to it when necessary.
- Use the radar only as a navigation aid.
The final navigation decision must always be made by the operator him/herself.
Making the final navigation decision based only on the radar display may cause accidents such as collisions or running aground.
- When using the sea clutter suppression function, never set the suppression level too high canceling out all image noises from the sea surface at close range.
Detection of not only echoes from waves but also targets such as other ships or dangerous objects will become inhibited.
- When using the rain/snow reflection suppression function, never set the suppression level too high canceling out all image noises from the rain or snow. Detection of not only echoes from the rain or snow but also targets such as other ships or dangerous objects will become inhibited.
- Use the target tracking function only as a navigation aid.
The final navigation decision must always be made by the operator him/herself.
Making the final navigation decision based only on the target tracking function information may cause accidents.

Operation Unit

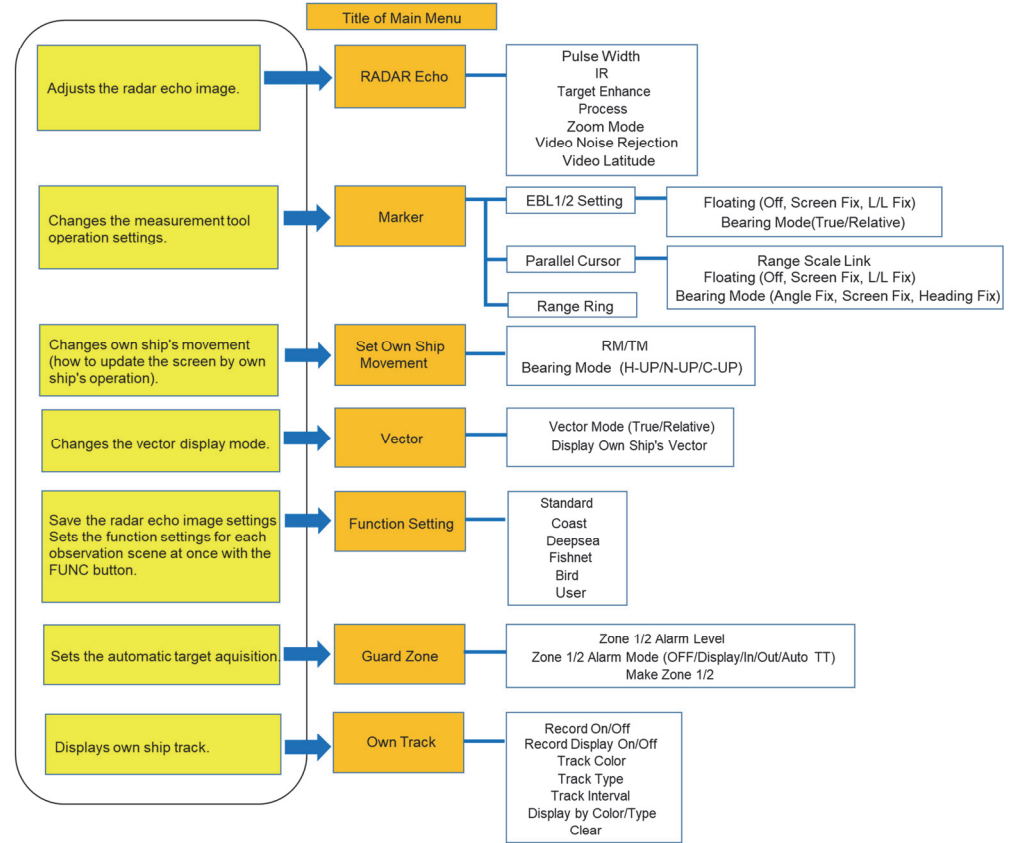
Name	Shape	Main Function	Name	Shape	Main Function
MENU		Displays the main menu. Detailed function settings are performed from the main menu.	MULTI		When no menu or dialog is displayed, the MULTI control menu is displayed with a press. Various functions such as EBL/VRM, MOB, and anchor watch can be used.
CLR		Press: Returns to upper menu hierarchy or clears a dialog. The alarm sound can be silenced while the alarm sound is sounding. Long press: Exit the current function and display the normal screen (transmit/standby screen). * Antenna transmission does not end.			Turn left or right to move the cursor, move the menu selection focus, or increase or decrease the value of the numeric input. When the MULTI control is turned left or right while pressing, the cursor can be moved up and down, and the parallel line interval value can be changed when operating the Parallel Cursor.
Cross Key		Used to select menu items (focus movement) or move the cursor. Long press to accelerate the cursor move.	GAIN		Turn left or right to adjust sensitivity. Push: to switch between AUTO and MANUAL of sensitivity adjustment.
ENT		Decides menu selection and numeric input. When any menu is not displaying and this button is pressed during antenna transmission, TT is manually acquired at the point where the cursor is. If AIS or TT is already displayed at the cursor location, numerical information is displayed.	SEA		Turn left or right to adjust sea clutter suppression. Push: to switch between AUTO and MANUAL of sea clutter suppression adjustment.
RANGE		Switches the display range. Press + to increase the range and press - to decrease the range.	RAIN		Turn left or right to adjust rain/snow clutter suppression. Push: to switch between AUTO and MANUAL of rain/snow clutter suppression adjustment.
USER1/ USER2		Screen capture function and TLL transmission function can be registered and operated. Also, frequently used menus can be assigned as menu shortcuts to each short press and long press.	FUNC		The radar image setting (function mode) that matches the observation scene can be set instantly. Long press to turn off the function mode.
EBL		Calls the EBL function. Used when measuring the direction.	BRILL		Turn left or right to adjust display brightness. When pressed, the display color can be switched to the day, dusk and night. Adjust to a state suitable for the operating time and ambient lightness. Long press to maximize brightness.
VRM		Calls the VRM function. Used when measuring distance.	STBY		Press to switch to standby mode during antenna transmission. When pressed simultaneously with the [TX/PRF] button, the display unit turns off.
			TX/PRF		When pressed during antenna standby, switches to the transmission state. Long press during preheat countdown to forcibly terminate preheat countdown. Long press to hide the heading line only while pressing.

MULTI control menu

Name	Example	Overview	Name	Example	Overview
EBL1/EBL2		Measures the target direction. To turn off, by long pressing the MULTI control while focusing on [EBL1] or [EBL2] in the menu.	AIS		Displays the AIS list and ship name.
VRM1/VRM2		Measures the distance to the target. To turn off, by long pressing the MULTI control while focusing on [VRM1] or [VRM2] in the menu.	TT		Displays TT list or cancels all acquired targets.
Parallel Cursor		Measures the distance and direction with parallel lines. To turn off, by long pressing the MULTI control while focusing on [Parallel Cursor] in the menu.	OFF-CENTER		Moves the display position of own ship.
MOB		Records the point of falling overboard. To turn off, by selecting the menu again.	Mark		Marks any point. To delete each item individually, select [Delete]. To delete all items at once, long press the MULTI control while focusing the [Mark] in menu.
Anchor Watch		Starts watching the anchor dragging. Select "Finish" from the menu to hide the watch circle.	Line		Draws a line at any point. To delete each item individually, select [Delete]. To delete all items at once, long press the MULTI control while focusing the [Line] in menu.
Vector Length		Set the length of the vector to be displayed by calculating from the ship speed/course. Ex.) increase	Ownship Mark		Marks own ship's position at the time of menu selection. To delete them individually, select [Delete]. To delete them all at once, long press the MULTI control while focusing the [Ownship mark] in menu.
Radar Trails		Set the display time of radar trails.	Data On / Data Off (On)		Hides all but the radar image, trails, and cursor etc.

● The main functions of the Main Menu and the usage of the hierarchy are shown below.

Not all menu contents. Refer to the INSTRUCTION MANUAL for details.



● In addition to the main menu, the basic functions and functions that may be used during navigation are shown below.

