



ALPHATRON  
Marine



AM | FM | HF | LF | VHF | UHF | GPS

# High quality antennas

A complete range of maritime solutions

[www.jrc.am](http://www.jrc.am)

# Antennas

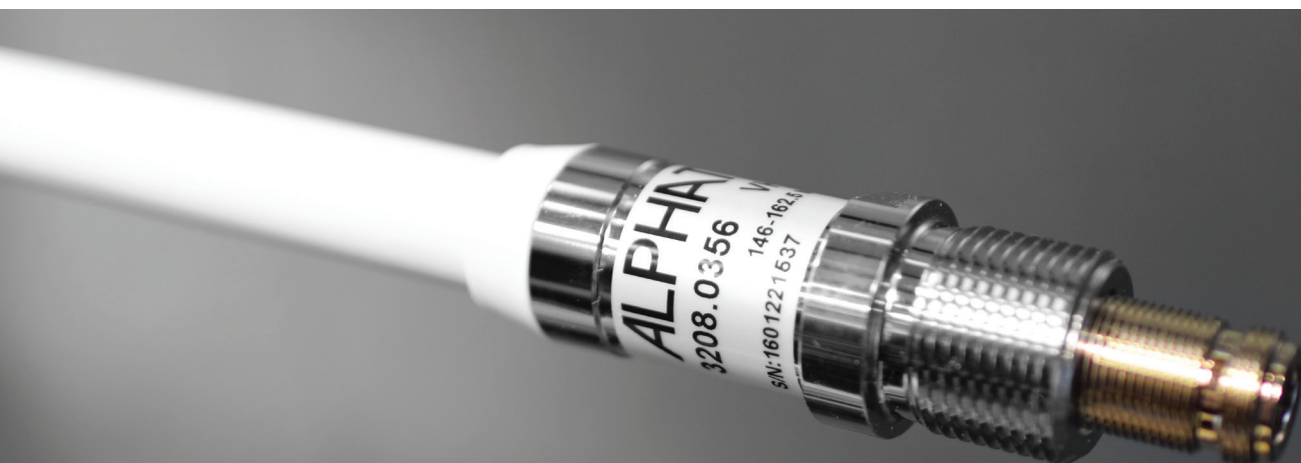
Our range of high quality antennas and accessories are intended for use in voice, data, GPS, marine based radio and other systems. Specially designed and manufactured to provide exceptional performance and to withstand the maritime environment.



## High quality design

Our antennas are made of fiberglass and/or stainless steel for high-end applications where maximum range and durability are important for example usage on oceans and large lakes. We recommend fiberglass tube antennas, which are coated with smooth polyurethane and will last for many years.

Small boats may also use stainless steel whip antennas because they are rugged and can withstand lots of mechanical forces during heeling of the small vessel. Depending on conditions and weight of an antenna, you can use stainless steel accessories like the adapter tube, deck, rail or wall mount.





**AM/FM****3208.0358****126 cm  
450 g**

## AFM126-00U

AM/FM radio broadcast  
fiber glass antenna

- Designed for leisure boats
- Similar design VHF/AIS bands available
- Glass fiber, PVC, copper, PE, chromed brass
- UHF-female connector

AL-114MR

CH-114D

CH-114DW

CH-KTN\*

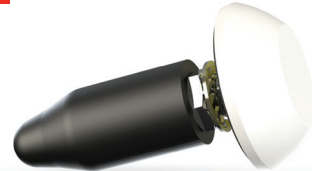
CH-TA

NY-114DW

NY-TA

SS-MR

\* Included as standard

**GPS****3208.0368****15 cm  
100 g**

## GPS015-26F

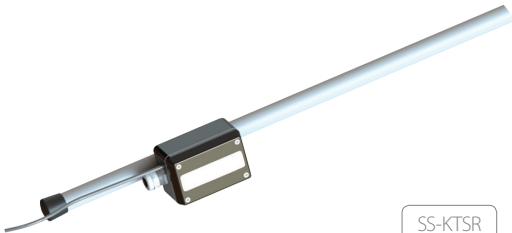
Low profile active  
marine GPS antenna

- For navigation and tracking purpose
- Through hole deck or bracket mounting
- ABS, PE, chromed brass, PCB
- FME-male connector (integrated in base)

NY-114D

CH-KTN\*

\* Included as standard

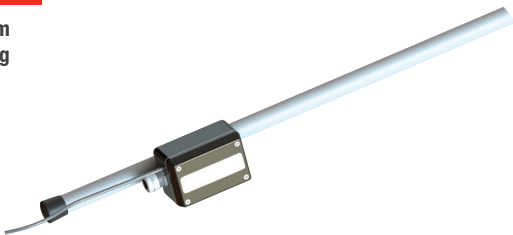
**HF****3208.0364****5 m  
5.1 kg**

SS-KTSR

## LHF500-00S

Two part 5 m HF fiber glass antenna  
with coaxial connection box

- Rugged, high quality design for professional use
- Built in matching transformer for low frequency receiving
- PU-painted glass fiber tubes and chromed solid brass
- Screw terminal inside connection box

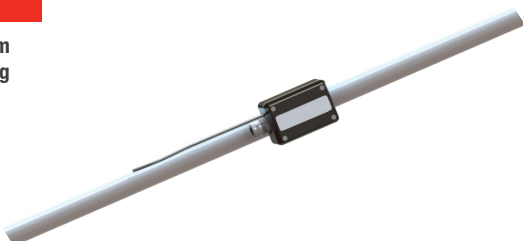
**LF/HF****3208.0362****7 m  
5.9 kg**

SS-KTSR

## LHF700-00S

Three part 7 m LF/HF fiber glass  
antenna with coaxial connection box

- Rugged, high quality design for professional use
- Built in matching transformer for low frequency receiving
- PU-painted glass fiber tubes and chromed solid brass
- Screw terminal inside connection box

**LF/HF****3208.0360****9 m  
12.7 kg**

SS-KTLR

## LHF900-00S

Three part 9 m LF/HF fiber glass  
antenna with coaxial connection box

- Rugged, high quality design for professional use
- Built in matching transformer for low frequency receiving
- PU-painted glass fiber tubes and chromed solid brass
- Screw terminal inside connection box

UHF

3208.0350

44 cm  
350 g



## UHF044-03N

3dB UHF fiber glass antenna (multiband)

- High quality antenna for professional use
- Multiband: LTE, GSM, UMTS, WLAN b/g/n
- Glass fiber, PVC, PTFE, PE, chromed brass
- N-female connector

AL-114MR	CH-114D	CH-114DW	CH-KTN*
CH-TA	NY-114DW	NY-TA	SS-MR

\* Included as standard

UHF

3208.0346

114 cm  
500 g



## UHF114-06N

6dB UHF fiber glass antenna

- Specified for GSM900, trunking, ISM
- DC grounded (DC short) anti-static
- Glass fiber, PVC, PTFE, PE, chromed brass
- N-female connector

AL-114MR	CH-114D	CH-114DW	CH-KTN*
CH-TA	NY-114DW	NY-TA	SS-MR

\* Included as standard

UHF

3208.0352

132 cm  
600 g



## UHF132-06N

6dB UHF fiber glass antenna

- Specified for TETRA or ISM
- DC grounded (DC short) anti-static
- Glass fiber, PVC, copper, PTFE, chromed brass
- N-female connector

AL-114MR	CH-114D	CH-114DW	CH-KTN*
CH-TA	NY-114DW	NY-TA	SS-MR

\* Included as standard

VHF

3208.0366

95 cm  
200 g



## VHF095-03U

3dB VHF stainless steel antenna

- Light weight, ideal for sailing boats
- Full omni directional radiation pattern
- Stainless steel, POM, chromed brass
- UHF-female connector

NY-TA
-------

GPS/VHF

3208.0354

110 cm  
690 g



## VHF110-03N

3/26dB VHF/GPS fiber glass antenna with diplexer

- Combined antenna for professional use
- Active GPS antenna
- Glass fiber, steel, PCB, PTFE, copper, brass
- Antenna: N-female , Diplexer: FME-male

AL-114MR

CH-114D

CH-114DW

CH-KTN\*

CH-TA

NY-114DW

NY-TA

SS-MR

\* Included as standard

VHF

3208.0356

126 cm  
500 g



## VHF126-03N

3dB VHF fiber glass antenna

- High quality antenna design
- Full omni directional radiation pattern
- Glass fiber, copper, PTFE, chromed brass
- N-female connector

AL-114MR

CH-114D

CH-114DW

CH-KTN\*

CH-TA

NY-114DW

NY-TA

SS-MR

\* Included as standard

VHF

3208.0344

126 cm  
500 g



## VHF126-03U

3dB VHF fiber glass antenna

- High quality antenna for professional use
- Similar design available for AIS and AM/FM
- Glass fiber, copper, PTFE, PE, chromed brass
- UHF-female connector

AL-114MR

CH-114D

CH-114DW

CH-KTN\*

CH-TA

NY-114DW

NY-TA

SS-MR

\* Included as standard

VHF

3208.0348

144 cm  
600 g



## VHF144-03N

3dB VHF fiber glass antenna  
Customer specified frequency

- High quality antenna for professional use
- End fed full  $1/2 \lambda$  dipole antenna design
- Glass fiber, copper, PTFE, PE, chromed brass
- N-female connector

AL-114MR

CH-114D

CH-114DW

CH-KTN\*

CH-TA

NY-114DW

NY-TA

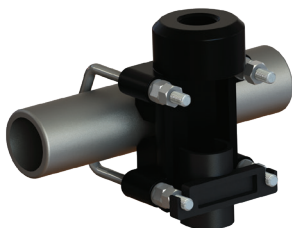
SS-MR

\* Included as standard

**AL-114MR**

3208.0370

605 g



## Pole bracket

- 1"-14NF threaded base antenna
- Die cast aluminum, stainless steel

**CH-114D**

3208.0380

450 g



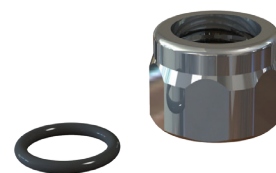
## Deck mount

- 1" revolving nut mounting system
- Chromed brass, stainless steel

**CH-KTN**

3208.0374

60 g



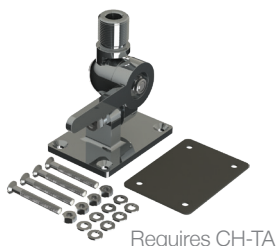
## Revolving nut kit

- 1" revolving nut mounting system
- Chromed brass, EPDM

**CH-114DW**

3208.0378

1 kg



## 4-way deck mount

- 1"-14NF threaded base antenna
- Chromed brass, steel, rubber

**CH-TA**

3208.0376

400 g



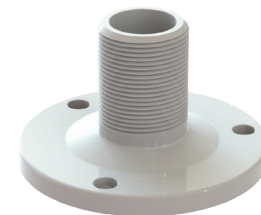
## Adapter tube

- G1"-11 threaded base antenna
- Chromed brass

**NY-114D**

3208.0386

30 g



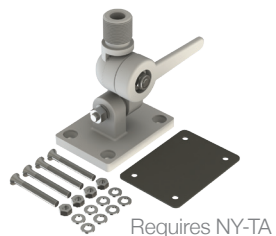
## Deck mount

- 1"-14NF threaded base antenna
- Nylon

**NY-114DW**

3208.0372

275 g



## 4-way deck mount

- 1"-14NF threaded base antenna
- Nylon, stainless steel, rubber

**NY-TA**

3208.0382

50 g



## Adapter tube

- G1"-11 threaded base antenna
- Reinforced nylon

**SS-114D**

3208.0328

230 g



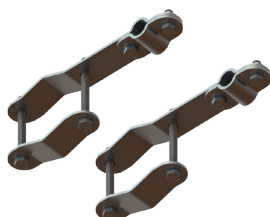
## Deck mount

- 1"-14NF threaded base antenna
- Polished stainless steel

**SS-KTLR**

3208.0392

3.2 kg



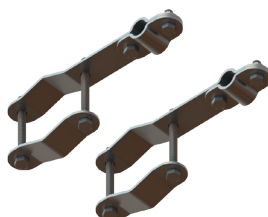
## Mounting kit (large)

- Pole and rail mounting
- Stainless steel

**SS-KTSR**

3208.0390

1.8 kg



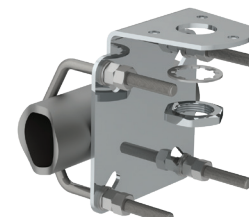
## Mounting kit (small)

- Pole and rail mounting
- Stainless steel

**SS-MR**

3208.0324

650 g



## Pole/wall mount

- 1"-14NF threaded base antenna
- Stainless steel



# Frequencies

Frequencies between 3000 hertz (3 KHz) and 300,000,000,000 hertz (300 GHz) are called radio frequencies since they are commonly used in radio communications. These are the frequency bands:

Bands		Frequency	Wavelength	Applications
VLF	Very Low Frequency	3 to 30 kHz	100 to 10 km	Submarine communication
LF	Low Frequency	30 to 300 kHz	10 to 1 km	Vessel/airplane beacon
MF	Medium Frequency	300 to 3000 kHz	1km to 100 m	Marine/AM/Amateur radio
HF	High Frequency	3 to 30 MHz	100 to 10 m	Marine/Air/Amateur radio
VHF	Very High Frequency	30 to 300 MHz	10 to 1 m	Marine, TV, FM, Police radio
UHF	Ultra High Frequency	300 to 3000 MHz	1 m to 10cm	Marine, Mobile phone, WiFi
SHF	Super High Frequency	3 to 30 GHz	10 to 1cm	Radar, Satellite broadcasting
EHF	Extremely High Frequency	30 to 300 GHz	1 cm to 1 mm	Radio astronomy



[www.jrc.am](http://www.jrc.am)

Centers of Excellence  
Houston, Rotterdam, Singapore, Tokyo