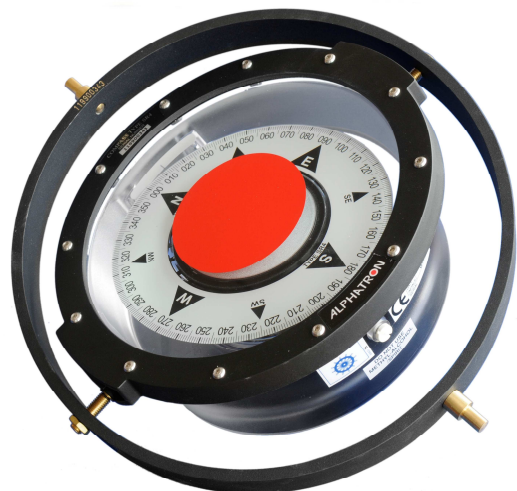


Alphabinnacle H

Installation and operation manual



The information in this manual is subject to change without further notice. No rights can be derived from this manual.

Document : Alphabinnacle
Revision : 1.0
© ALPHATRON MARINE B.V.

ALPHATRON MARINE B.V.
Schaardijk 23
3063 NH ROTTERDAM
The Netherlands
Tel: +31 (0)10 - 453 4000
Fax: +31 (0)10 - 452 9214

P.O. Box 210003
3001 AA ROTTERDAM

Web: www.alphatronmarine.com



Table of contents:

1	VERSION CONTROL	4
2	INSTALLATION.....	5
3	CERTIFICATE.....	7
4	TECHNICAL DRAWINGS	8
5	TECHNICAL SUPPORT	10

**Important!**

Do not make changes to the instrument in whatever way without the written approval of ALPHATRON MARINE, otherwise the guarantee will lapse.

Please read the manual thoroughly before installing and/or using the instrument.

Terms of delivery: The general sales and delivery conditions for the metal and electrotechnical industry, as filed at the Registry of the District Court of The Hague on 21 August 1991, apply to all our deliveries. Listed in the Commercial Register of the Chamber of Commerce in Rotterdam, under file number 182635.

Guarantee period: For Alpatron equipment, 1 year with respect to material and/or construction errors; excluding travel and accommodation expenses and additional sea trials. Unless agreed otherwise.

Nothing from this manual may be copied and/or published by means of print, photocopy, microfilm or in whatever form whatsoever, without the prior written permission of Alpatron.

Although this manual has been created with the greatest possible care, Alpatron does not accept any liability for the consequences of any inaccuracies it contains.



1 VERSION CONTROL

VERSION 1.0



2 INSTALLATION

Positioning

IMO Resolution A382(X) Magnetic Compasses Carriage and Performance Standards includes a section on the positioning of the magnetic compass. It is also strongly recommended that ISO 694 - Positioning of Magnetic Compasses in Ships - is complied with. If, due to the special construction of the vessel, it is necessary to deviate from these, then the Flag State Authority should be consulted, as incorrect positioning can affect the expected performance of the magnetic compass.

Installation

Details and notes within the installation drawings give adequate information to carry out an installation.

Care should be taken to ensure the vertical axis of the periscope and binnacle are parallel. If there is any doubt as to the capability of the shipyard methods to guarantee this, then we recommend the following:

- a) Fit the binnacle as per drawings.
- b) Fit the compass in the binnacle.
- c) Locate the periscope into the base of the binnacle as per drawing.
- d) Hold the periscope in position and check that the compass card can be viewed through the mirror. Adjust the position if necessary.
- e) Secure the ceiling flange.

COMPASS ADJUSTING

TO BE COMPLETED BY A CERTIFIED COMPAS ADJUSTER.

MAINTENANCE

Compass Bowl

The compass bowl should be regularly inspected to ensure that there are no leaks or bubbles. In addition, the upper and lower glass should be maintained in a clean condition, and the compass gimbaling checked.

A few times per year, and more regularly on vessels with high vibration levels or following heavy weather, an operational test should be carried out on the magnetic compass to ensure that no friction has developed on the pivot and jewel. This operational test should be carried out as follows:-

Whilst the vessel is alongside, bring a magnetic object towards the compass so that the heading is deviated by 2 degrees. Hold the deviated compass card in this position for 10 seconds, and then release by removing the magnetic object. When the compass card settles it should be within 15 minutes of arc of the original heading. If the compass card does not return within this limit then there is a high level of friction between the pivot and jewel. The compass should be overhauled by a competent authority, as described in Marine Guidance Note MGN 57.



Binnacle

The AlphaBinnacle has one of the simplest periscope arrangements, utilising only one lens and mirror. The lens is easily removed for cleaning at periodic intervals from the forward side of the binnacle.

The only area where maintenance may be required is with the binnacle lighting. There are two 24 volt lamps within the binnacle, and an additional spare, all accessible by removing the binnacle helmet and tilting the compass bowl.

Spare Parts

The following is a list of spare parts and their stock code numbers:

PART DESCRIPTION	PART NUMBER
Binnacle Helmet	W1604Alpha
Knob, Black, M10 x 20 for Binnacle Helmet	W9495
Knob, Black, For Flinders Bar Cover	W9496
Lamp, 24 volt, 15 watt SBC-Pygmy	W9260
SR4 Magnetic Compass	FW9900Alpha
Float & Card Assembly complete with Magnet	WC2520
Rubber 'O' Ring for Compass Top Glass	W2627
Diaphragm, Rubber for Compass	W2624
Liquid for Compass, 1 litre bottle	FW8870
Control Unit for Binnacle Lighting	FW9862Alpha
Fuse, 20 x 5 mm Anti-Surge, 3.15 amp for Control Unit	W6680



3 CERTIFICATE



Certificate number: 29247/A0 EC

File number: NAV2/29753/1

Annex A1 Item number: A.1/4.1

This certificate is not valid when presented without the full attached schedule composed of 7 sections

www.veristar.com

Notified Body 0062 - MARINE EQUIPMENT DIRECTIVE 96/98/EC

EC TYPE EXAMINATION CERTIFICATE

*as per Module B of European Union Council Directive 96/98/EC on marine equipment
as amended by Commission Directive 2010/68/EU*

This certificate is issued to

John Lilley & Gillie Ltd (Incorporating Thomas Walker & Son Ltd.)
North Shields - UNITED KINGDOM

for the type of product

MAGNETIC COMPASS

MK2000S / Alphabinnacle H Binnacle Type A1
Sestrel SR4 Class A Compass
Azimuth Bearing Device (group 1) FW9011

Requirements:

SOLAS 74 Convention as amended, Regulations V/18 and V/19,
IMO Resolution A.382(X) - IMO Resolution A.694(17),
ISO 1069 (1973) - ISO 25862 (2009),
IEC 60945 (2002) - IEC 62288 Ed.1.0 (2008).

This certificate is issued under the French Maritime Authority to attest that BUREAU VERITAS did undertake the relevant type-examination procedures for the product identified above which was found to comply with the relevant requirements of the Council Directive 96/98/EC of 20 December 1996 as amended.


This certificate will expire on: 28 Sep 2017

For BUREAU VERITAS Notified Body 0062,

At BV LONDON, on 28 Sep 2012,

Spencer Yule

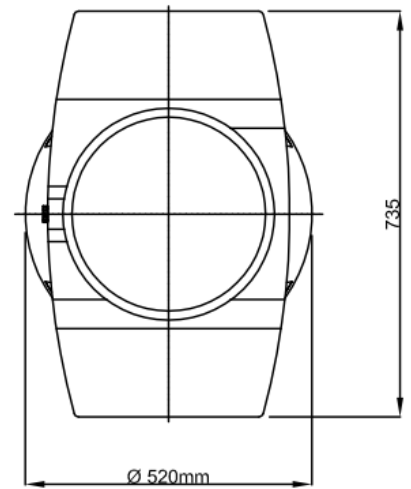


This certificate does not allow to issue the Declaration of Conformity and to affix the mark of conformity (wheelmark ) to the products corresponding to this type. To this end, the production-control phase module (D, E or F) of Annex B of the Directive is to be complied with and controlled by a written inspection agreement with a notified body.

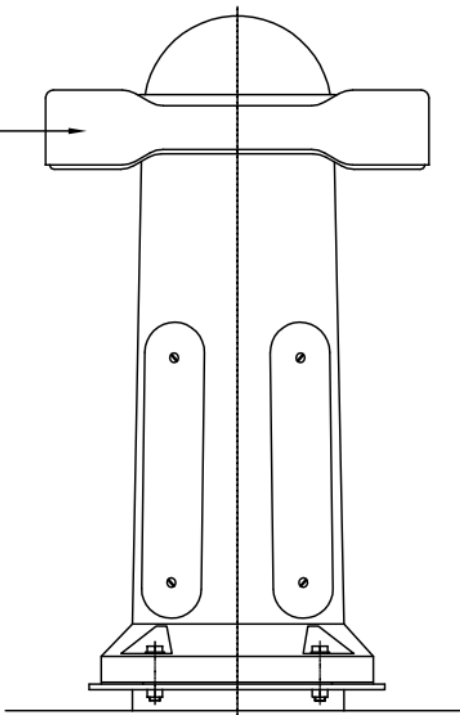
This certificate remains valid until the date stated above, unless cancelled or revoked, provided the conditions indicated in the subsequent page(s) are complied with and the product remains satisfactory in service. This certificate will not be valid if the applicant makes any changes or modifications to the approved product, which have not been notified to, and agreed in writing with BUREAU VERITAS. Should the specified regulations or standards be amended during the validity of this certificate, the product(s) is/are to be re-approved prior to it/they being placed on board vessels to which the amended regulations or standards apply. BUREAU VERITAS is designated by the French Maritime Authority as a "notified body" under the terms of the French Regulations Division 140 Chapter 140-2. This certificate is issued within the scope of the General Conditions of BUREAU VERITAS Marine Division available on the internet site www.veristar.com. Any Person not a party to the contract pursuant to which this document is delivered may not assert a claim against BUREAU VERITAS for any liability arising out of errors or omissions which may be contained in said document, or for errors of judgement, fault or negligence committed by personnel of the Society or of its Agents in establishment or issuance of this document, and in connection with any activities for which it may provide.



4 TECHNICAL DRAWINGS



FW9858:
Alphatron QC Collar
c/w QC Plates



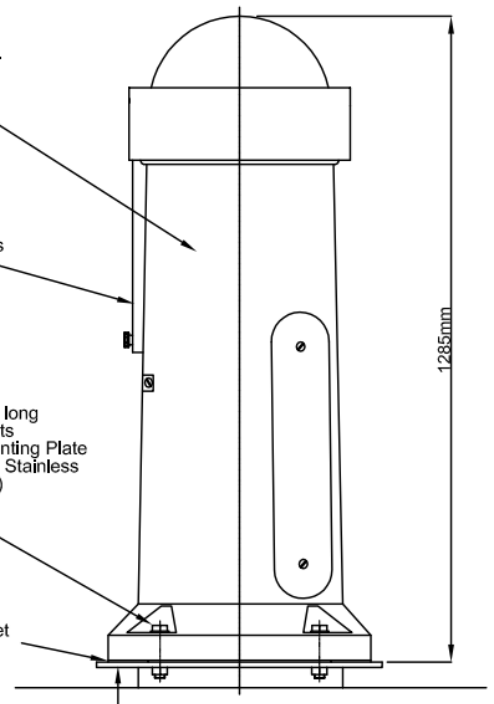
FW9850S-W-ALPHA.
Alphabinnacle H

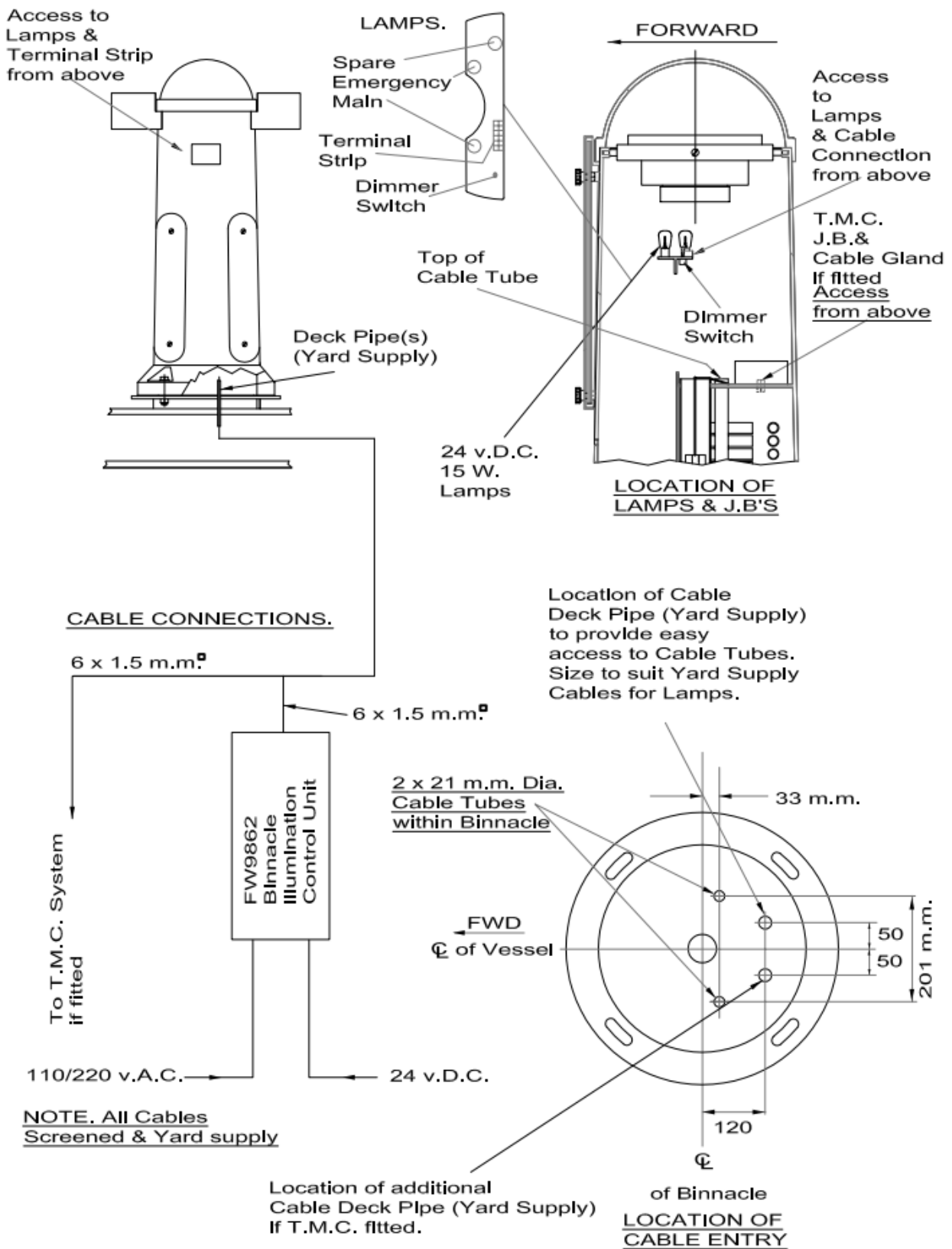
Flinders Plates

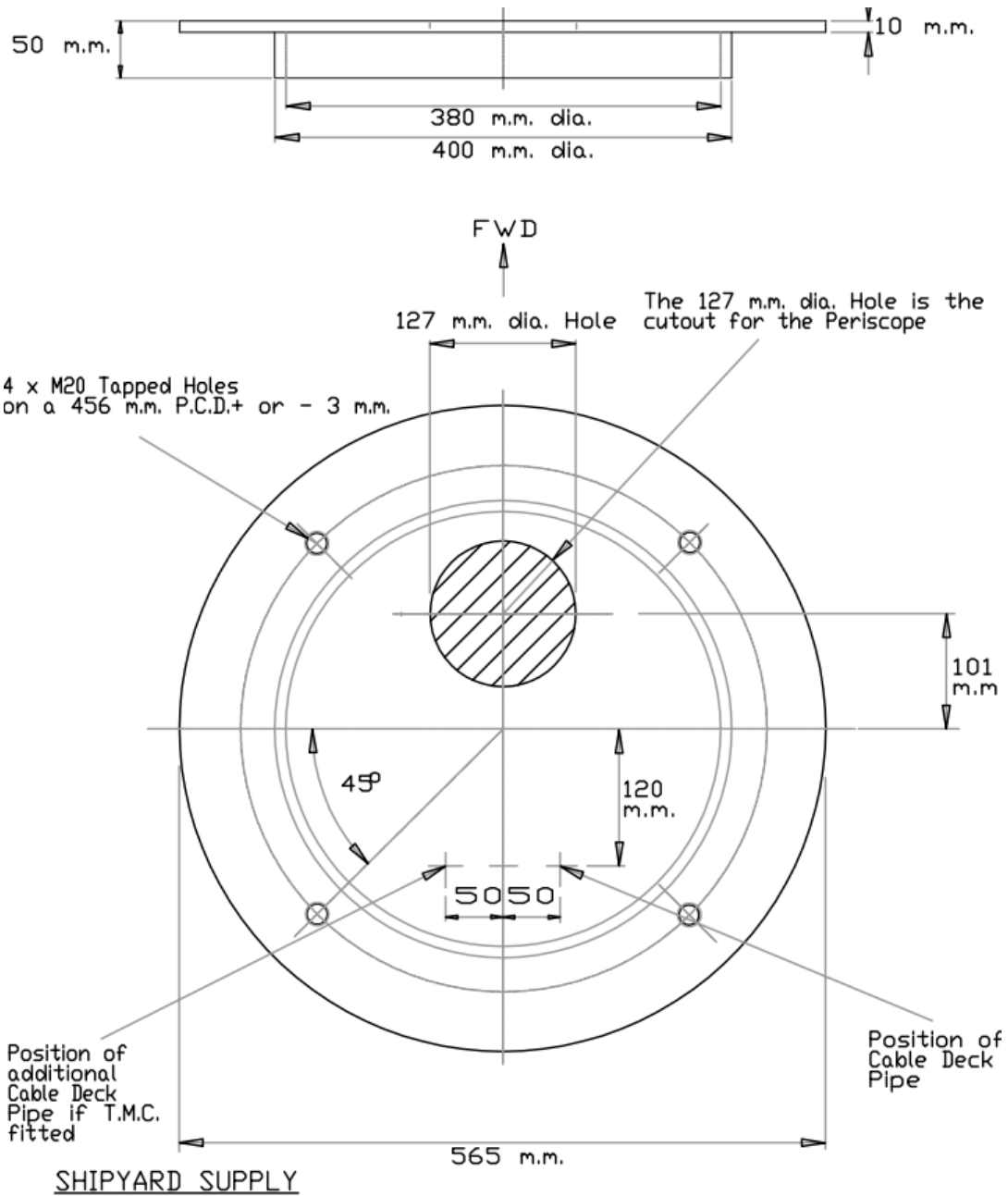
Four off M20 x 90 mm long
A4 Stainless Steel Bolts
threaded through Mounting Plate
and secured with M20 Stainless
Steel Nuts (Supplied)

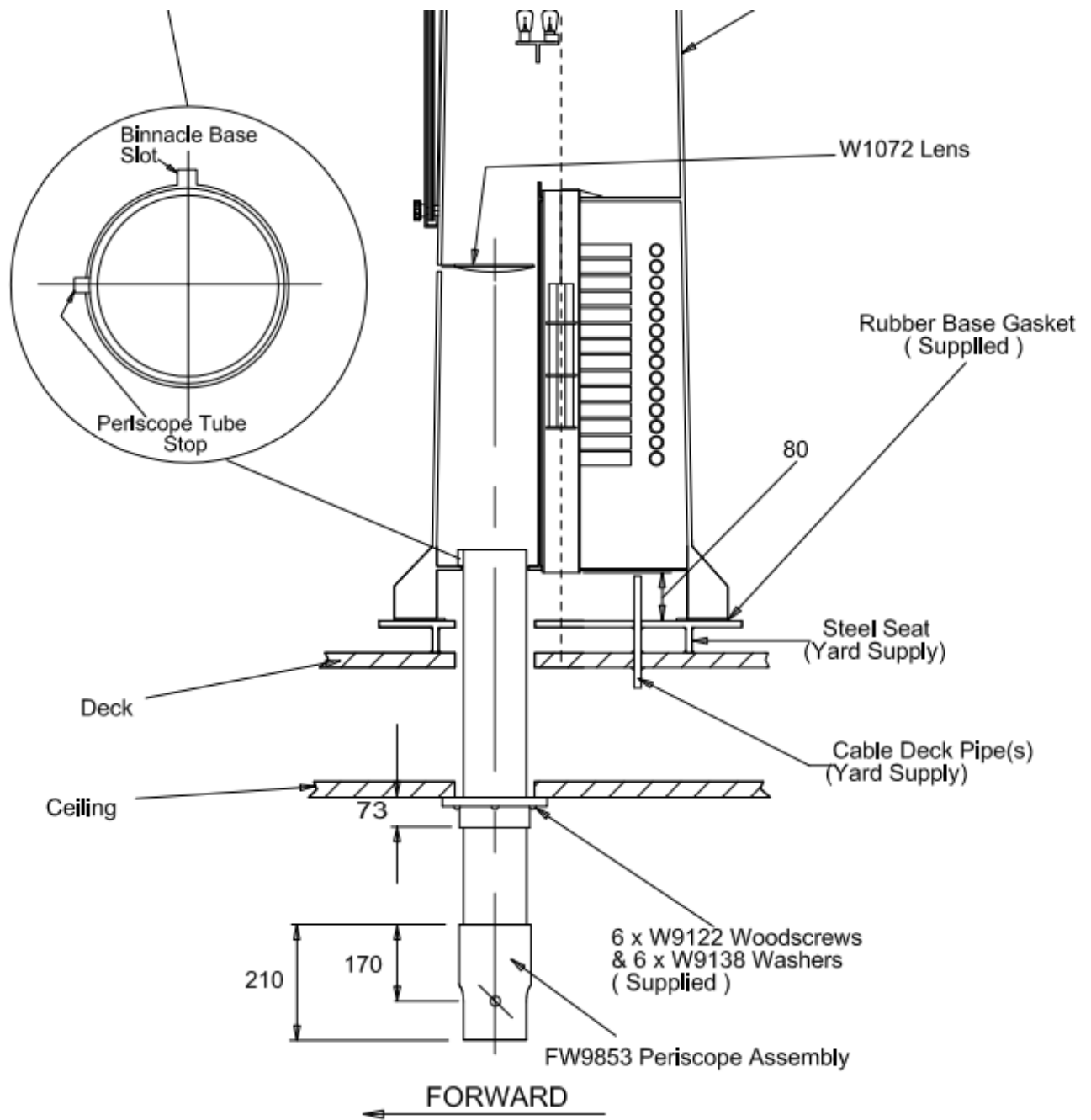
Rubber Base Gasket
(Supplied)

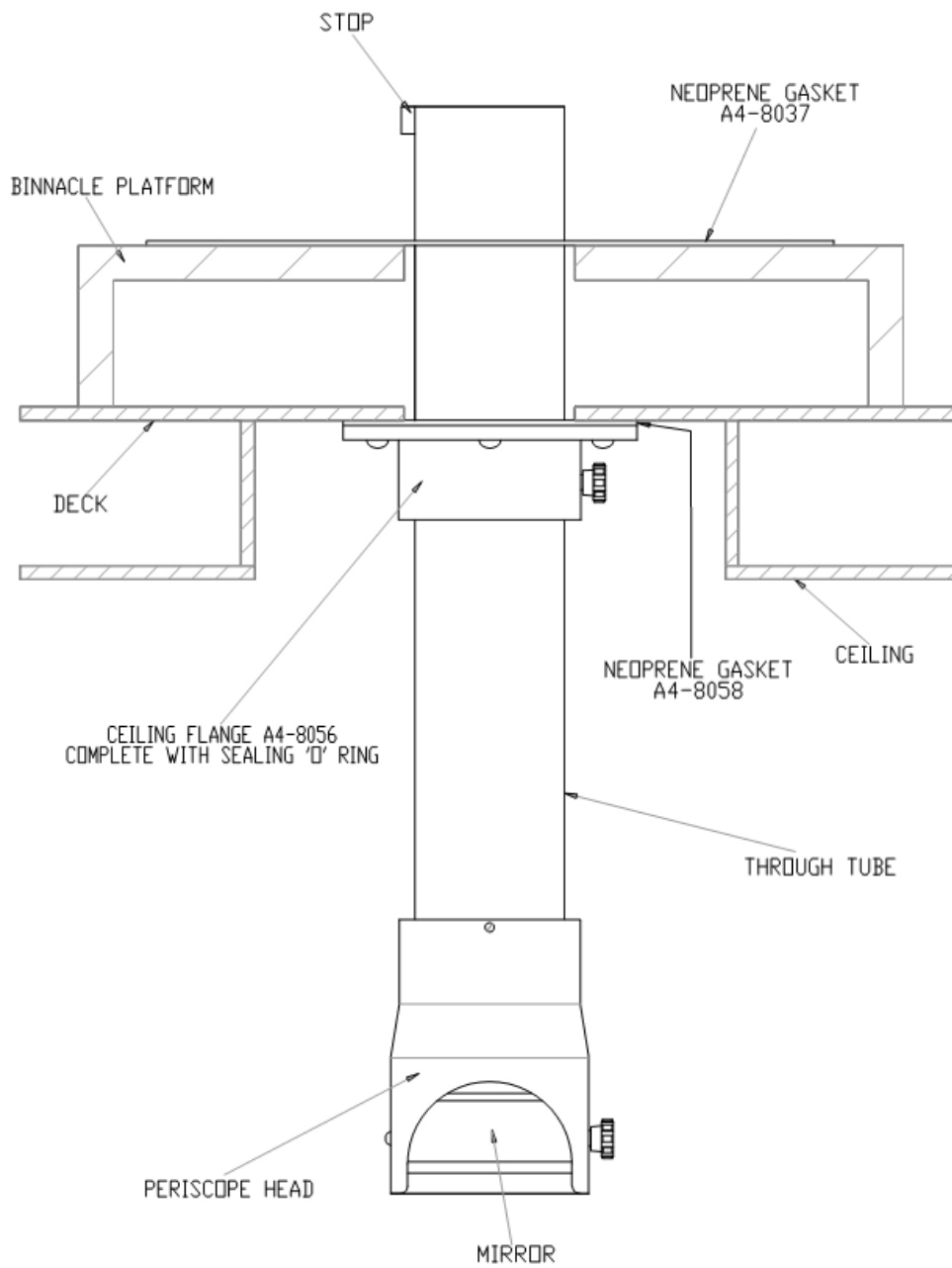
Mounting Plate (Yard supply)

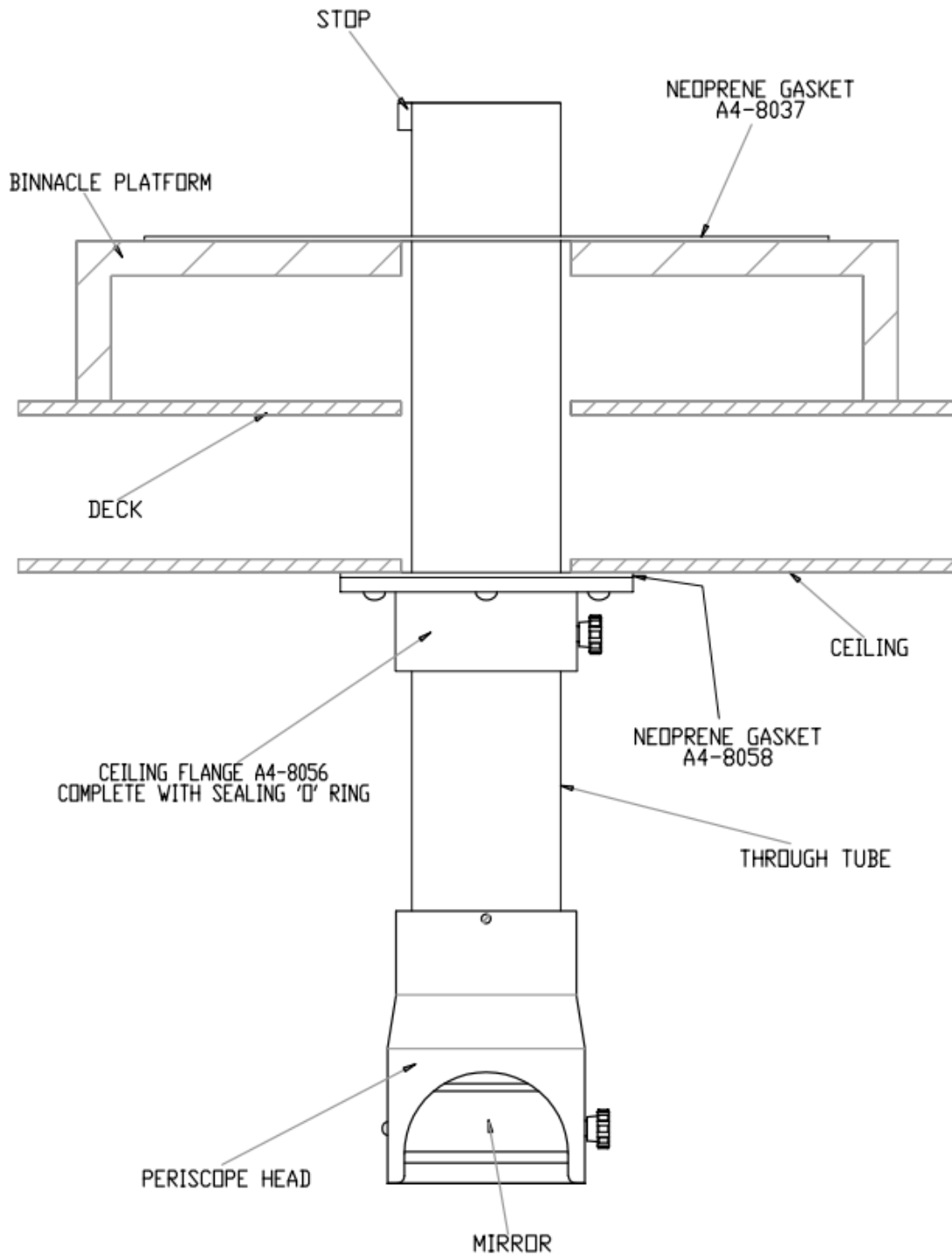


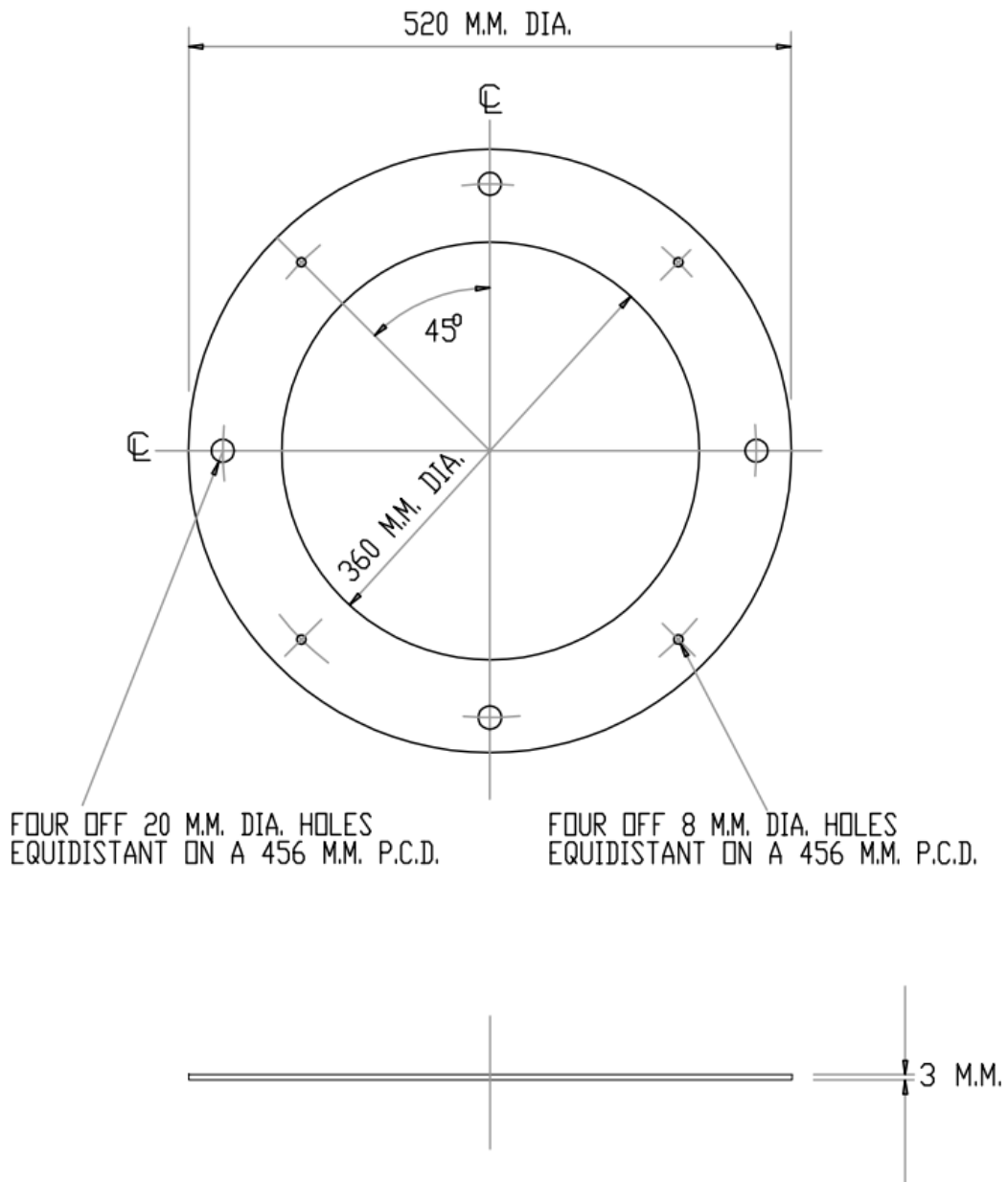


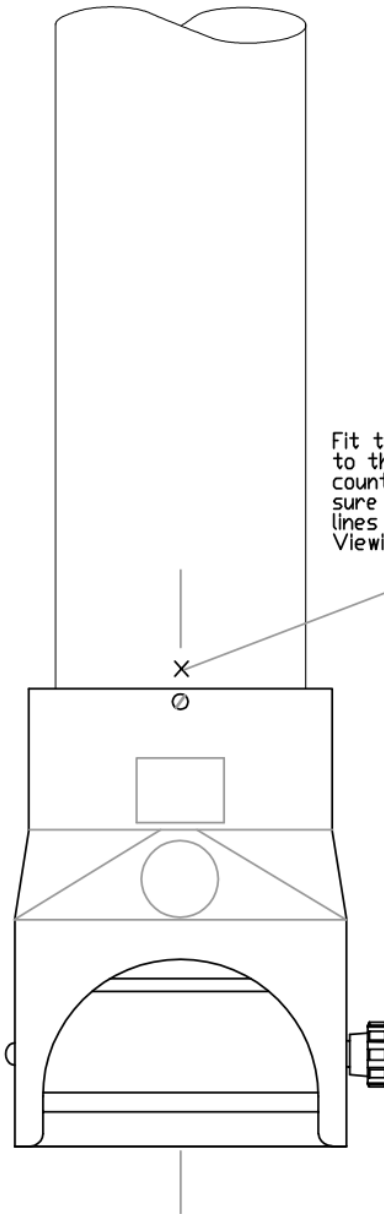




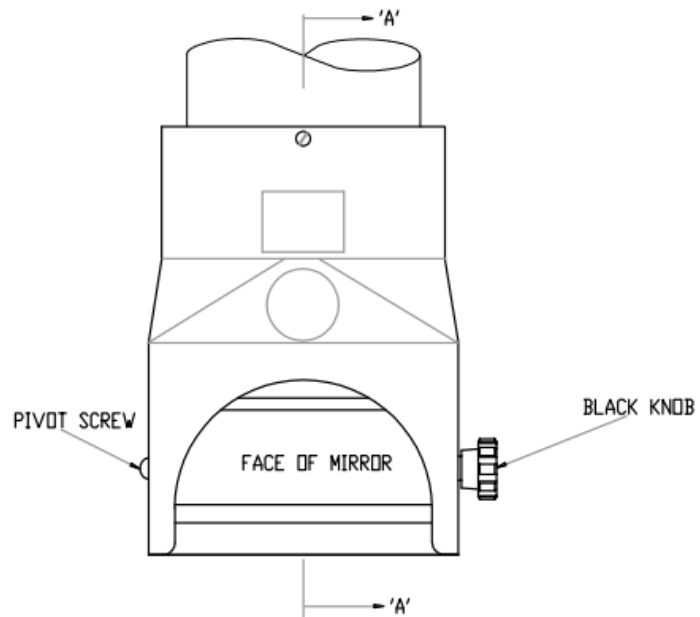




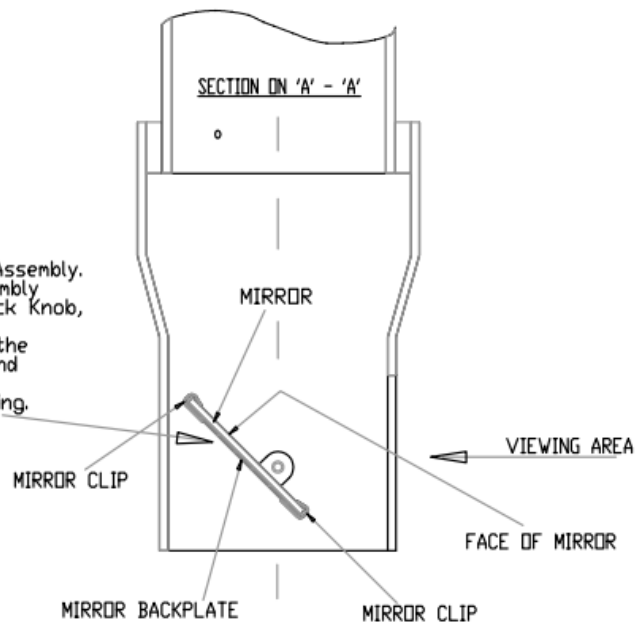


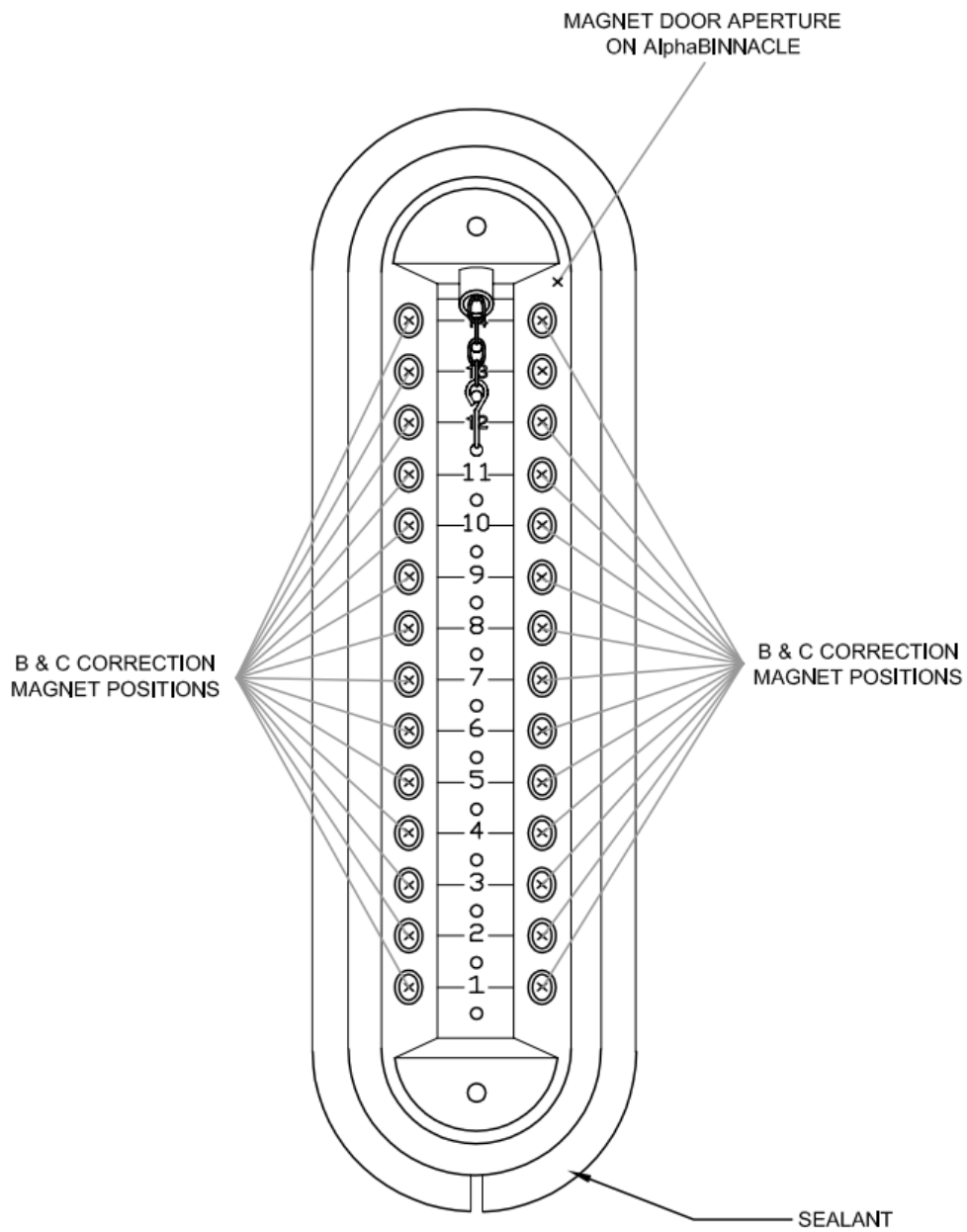


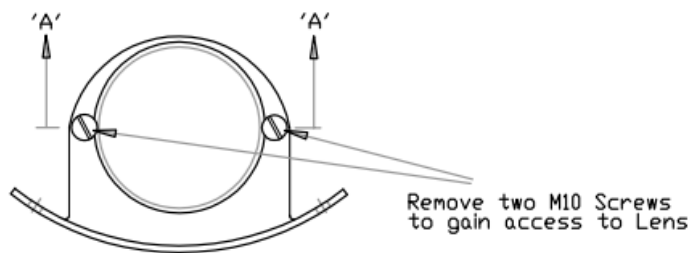
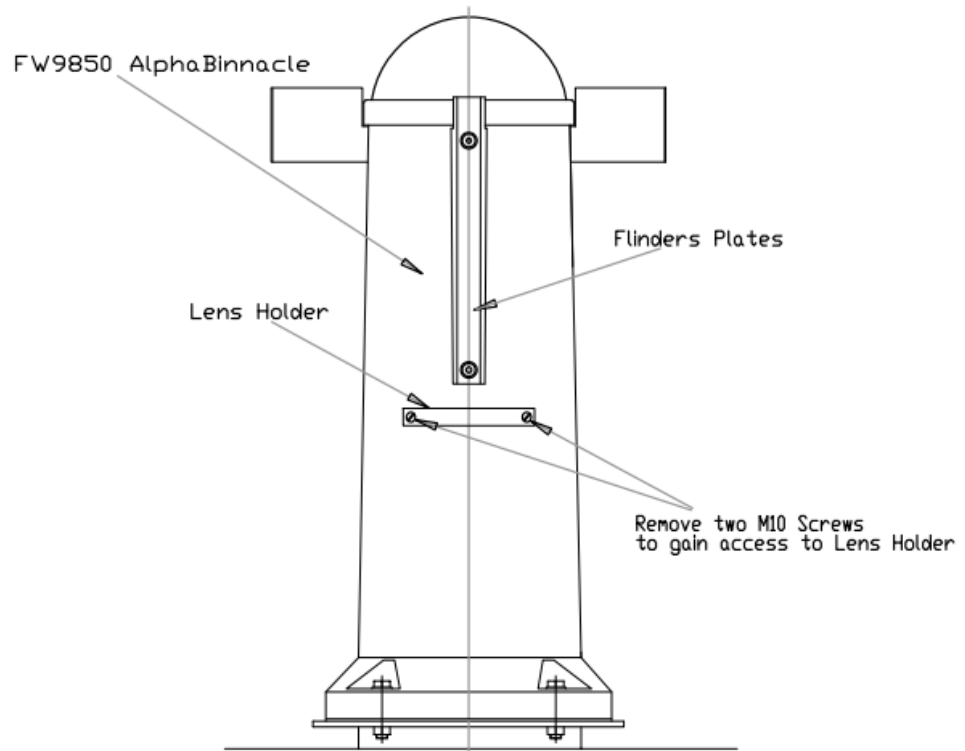
Fit the Reflector Head to the Tube with the three countersunk screws, make sure that the mark on the Tube lines up with the centre of the Viewing Area.



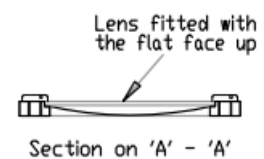
Remove the Pivot Screw, Black Knob and Washers and take out the Mirror Assembly. Refit the new Mirror Assembly with the Pivot Screw, Black Knob, and Washers as before but with the longest side of the Mirror towards the back and the Reflecting Surface pointing upwards as Drawing.





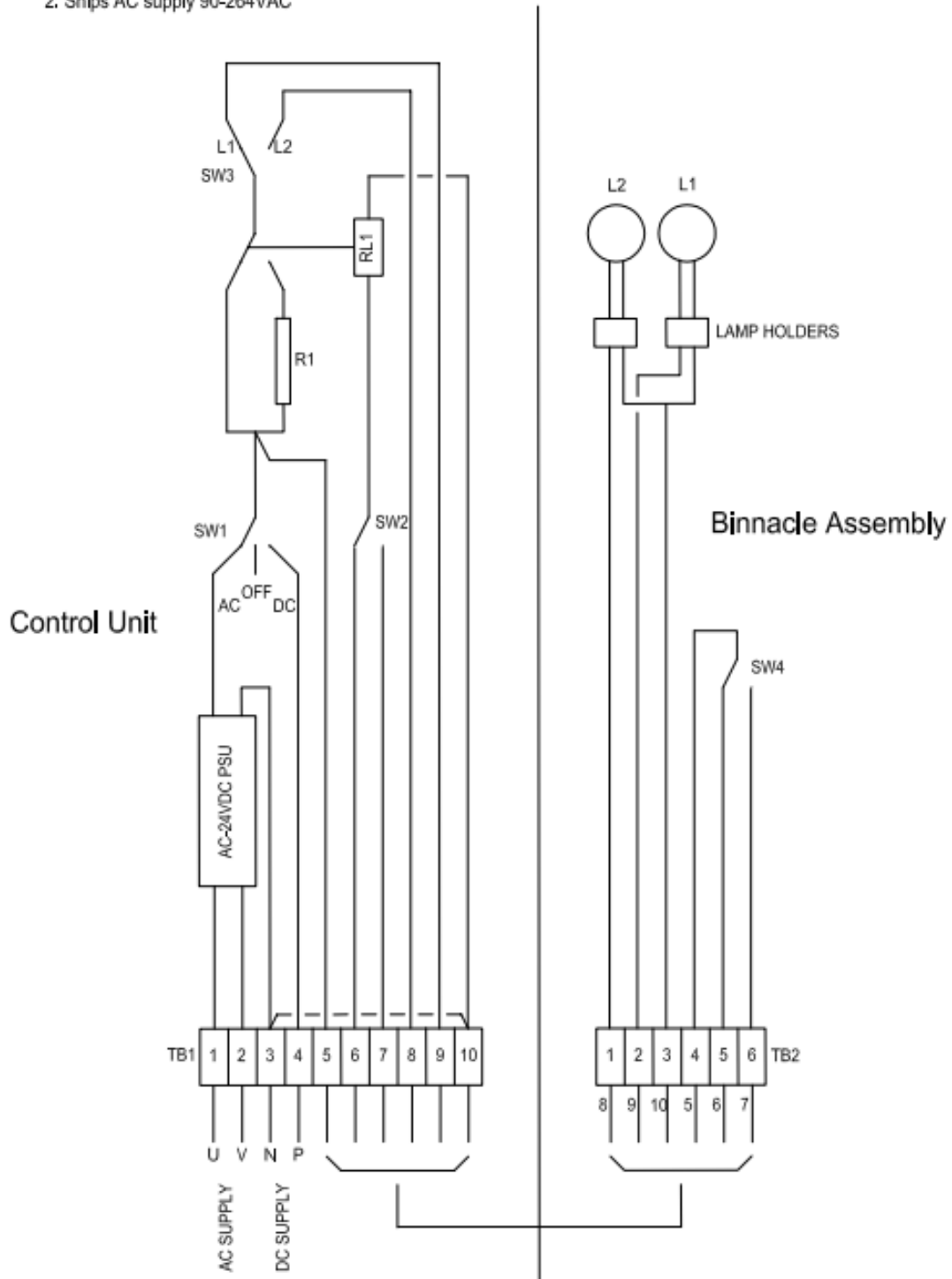


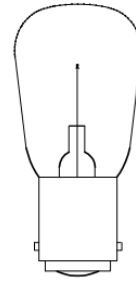
Remove the two M10 Screws in Binnacle to gain access to Lens Holder. Take out the Lens Holder. Remove the two M10 Screws in Lens Holder. Remove the Lens from the Holder. Refit the Lens into the new Holder with the flat face of the Lens up. Refit the two M10 Screws to hold Lens in place. Refit the new Lens Holder to the Binnacle with the flat face of the Lens up using the two M10 Screws.





NOTES:-1. SW2 & SW4 BRILLIANCE LEVEL TOGGLE SWITCHES
 2. Ships AC supply 90-264VAC





Lamp 24 Volts.D.C. 15 Watts S.B.C.

Ba15d

PYGMY 24/15/SBC

NOTE : Spare Lamp supplied fitted within AlphaBinnacle.



5 TECHNICAL SUPPORT

If you require technical support for this product, please contact:

Alphatron Marine BV
Schaardijk 23
3063NH, Rotterdam
P.O. Box 21003
The Netherlands
Tel: 0031(0)10 4534000
www.alphatronmarine.com
helpdesk@alphatronmarine.com