

Navigation Sounder LAZ 5100

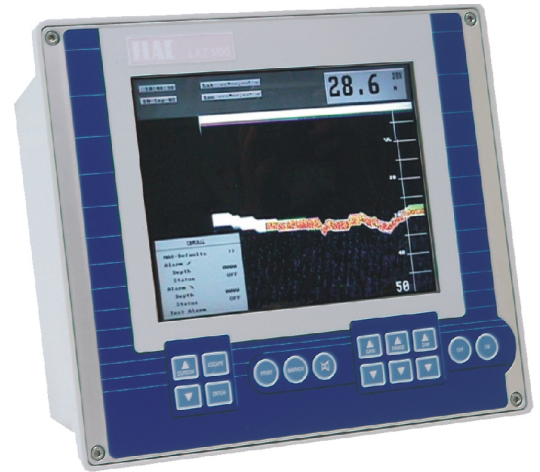
USER-FRIENDLY

FLEXIBLE

**HIGH RESOLUTION GRAPHICAL
TFT COLOUR DISPLAY**

HIGHLY RELIABLE

EASY TO OPERATE



LAZ 5100 - the new standard for navigation

The LAZ 5100 is the successor to the actual market leader LAZ 5000 and represents the new standard for navigation purposes from shallow to deep water.

It can be operated as single or dual frequency unit including retrofit with transducers of other manufacturers. The LAZ 5100 offers 6 basic ranges from 10 to 2000m. 24-hrs-memory, interfaces for output of depth data and input of position data, printer interface.

HIGH RESOLUTION GRAPHICAL TFT COLOUR DISPLAY

with Night & Day colour selection

continuous observation of depth data in conventional recording mode
digital display of water depth and selected range
digital display of position data
optional slave display

USER-FRIENDLY

self-explanatory and practical
direct access to all important functions
menu guided operation
menu controlled transducer adaption / performance setting
memory for depth soundings of more than the last 24 hours for print-out including all supplementary data such as sounding range, time and position

FLEXIBLE

8 standard frequencies available, in single or dual-frequency mode
NMEA standard interfaces allow integration of the LAZ 5100 into any bridge configuration
serial interface for data acquisition, remote control, status output
retrofit possible to existing ELAC or other manufacturers' transducers
standard ELAC transducers
LSE 297/50 kHz resp.
LSE 313 / 200 kHz, especially developed for LAZ 5100

RELIABLE

compliant with IMO rules and recommendations
dead man alarm
mute control for acoustic alarm
supply voltage monitoring
no mechanical wear and no paper consumption

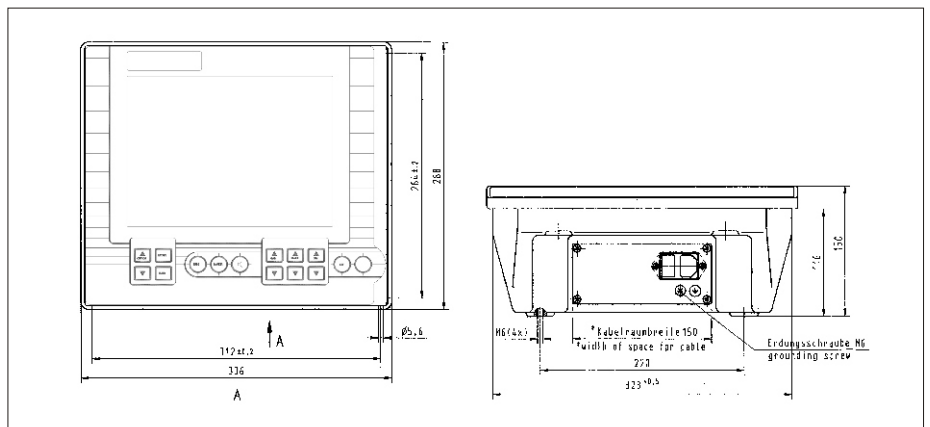
Navigation Sounder LAZ 5100

TECHNICAL DATA

Frequencies:	28, 30, 33, 38, 50, 100, 200, 210 kHz or more; single or dual frequency; existing transducers can be used
Display of data:	size: 10,4" graphic TFT colour display free selection of display layout; night&day presentation mode; optional on printer
Basic scale ranges:	0 10, 20, 50, 200, 500, 2000 m
Units:	meters, fathom, feet selectable
Measuring accuracy:	better than 2,5 % of depth reading
Minimum sounding depth below transducer:	approx. 0,5 m
Trim correction:	5 m
Draft correction:	up to 29,9 m
Output power:	150, 450, max. 1000 W RMS, depending on transducer
Pulse repetition rate:	max. 180 pulses per minute
Gain control:	TVG, automatic and manual gain control for depth finding
Special features:	recording of time and date (internally generated); data output (depth values etc.), time, date; indication of position if externally available; dead man alarm; mute control for acoustic alarm
Interfaces:	Output: DPT according to NMEA 0183 and DIN EN 61 162-1 Input: NAV data according to NMEA 0813 and DIN EN 61 162-1
Environmental conditions:	according to EN 60 945
Operating temperature:	-15°... +55°C
Protection code:	IP 53
Power supply:	90- 260 V, 50 - 60 Hz; optionally 10-30V DC; supply voltage monitoring
Power consumption:	approx. 35 W
Type approved	

DIMENSIONS

Weight:	6,1 kg
Dimensions:	height 288 x width 336 x depth 150 mm



Represented by